

ST. AMBROSE FINANCIAL SERVICES, INC.

Quarterly Interest Rates

Historical Data

Index	30-Jun-18	30-Jun-19	30-Jun-20	30-Jun-21	30-Jun-22	30-Sep-22	31-Dec-22
* 3-Month Constant Maturity Treasury Yield	1.94%	2.18%	0.15%	0.05%	1.76%	3.37%	4.45%
** Bond Fund Yield <i>SAFS</i> Investment Fund Yield US Bank Private Wealth Management	3.12%	3.04%	2.91%	2.59%	2.83%	3.04%	3.05%
Deposits							
Margin	0.00%	0.00%	0.00%	0.00%	0.00%	0.00%	0.00%
Rate (Base)	3.15%	3.05%	2.950%	2.600%	2.850%	3.050%	3.050%
Loans							
Margin (Loan)	0.75%	0.75%	0.75%	0.75%	0.75%	0.75%	0.75%
Margin (Loan-High)	2.75%	2.75%	2.75%	2.75%	2.75%	2.75%	2.75%
Rate (Loan)	2.70%	2.950%	1.000%	1.000%	2.500%	4.100%	5.200%
Rate (Loan-High)	4.70%	4.95%	3.000%	3.000%	4.500%	6.100%	7.200%
Rate (Base)	3.40%	3.30%	3.200%	2.850%	3.100%	3.300%	3.300%
Loan Rate (Base Plus)	3.65%	3.55%	3.450%	3.100%	3.350%	3.550%	3.550%
Revolving Line of Credit							
Margin (LOC)	0.50%	0.50%	0.50%	0.50%	0.50%	0.50%	0.50%
Rate (LOC)	3.65%	3.55%	3.45%	3.10%	3.35%	3.55%	3.55%

* As Published First Business Day Of The Quarter - Wall Street Journal - http://www.wsj.com/mdc/public/page/2_3020-keyinrates.html

** As published in the quarterly report (January, April, July & October) from U.S. Bank Private Wealth Management Relationship Review



ST AMBROSE FINANCIAL SERVICES UMA Bond Detail

Account: XXXXXXXX0700

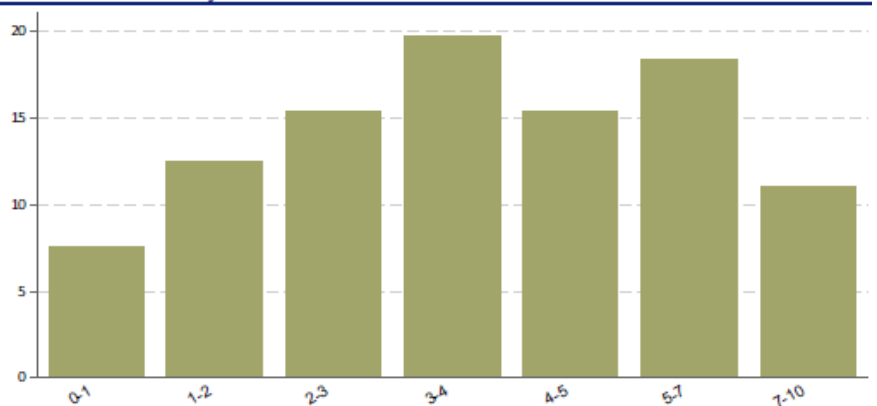
Holdings Method: Direct

Report Date: 01/02/2023

Bond Characteristics

	Portfolio	% Avail
Avg. Coupon (%)	2.86	100
Current Yield (%)	3.05	100
Yield To Maturity	4.84	100
Yield to Call/Worst (%)	4.84	100
Eff. Maturity (Yrs)	3.93	100
Effective Duration	3.54	100
Avg. Quality	A	100
# of Securities	91	100

Bond Effective Maturity



Treasury Yields At Constant Maturities

Tuesday, January 3, 2023

	WEEK ENDED		52-WEEK	
	DEC. 30	DEC. 23	HIGH	LOW
1-month	3.97	3.87	4.06	0.03
3-month	4.45	4.35	4.45	0.06
6-month	4.75	4.68	4.75	0.20
1-year	4.73	4.64	4.76	0.37
10-year	3.86	3.67	4.12	1.51