

ST. AMBROSE FINANCIAL SERVICES, INC.

Quarterly Interest Rates

Historical Data

Index	30-Jun-18	30-Jun-19	30-Jun-20	30-Jun-21	30-Sep-21	31-Dec-21
* 3-Month Constant Maturity Treasury Yield	1.94%	2.18%	0.15%	0.05%	0.04%	0.06%
** Bond Fund Yield SAFS Investment Fund Yield US Bank Private Wealth Management	3.12%	3.04%	2.91%	2.59%	2.62%	2.60%
Deposits						
Margin	0.00%	0.00%	0.00%	0.00%	0.00%	0.00%
Rate (Base)	3.15%	3.05%	2.950%	2.600%	2.650%	2.600%
Loans						
Margin (Base)	0.25%	0.25%	0.25%	0.25%	0.25%	0.25%
Margin (Base Plus)	0.50%	0.50%	0.50%	0.50%	0.50%	0.50%
Rate (Loan)	2.70%	2.950%	1.000%	0.770%	1.000%	1.000%
Rate (Loan-High)	4.70%	4.95%	3.000%	2.770%	3.000%	3.000%
Rate (Base)	3.40%	3.30%	3.200%	2.850%	2.900%	2.850%
Loan Rate (Base Plus)	3.65%	3.55%	3.450%	3.100%	3.150%	3.100%
Revolving Line of Credit						
Margin (LOC)	0.50%	0.50%	0.50%	0.50%	0.50%	0.50%
Rate (LOC)	3.65%	3.55%	3.45%	3.10%	3.15%	3.10%

* As Published First Business Day Of The Quarter - Wall Street Journal - http://www.wsj.com/mdc/public/page/2_3020-keyinrates.html

** As published in the quarterly report (January, April, July & October) from U.S. Bank Private Wealth Management Relationship Review



ST AMBROSE FINANCIAL SERVICES UMA Bond Detail

Account: 080013930700

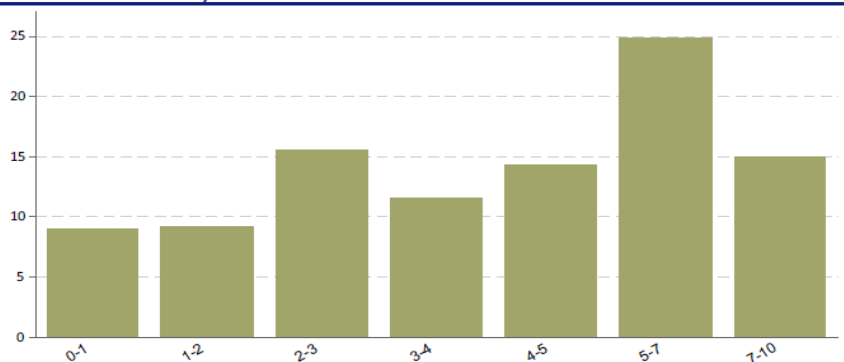
Holdings Method: Direct

Report Date: 12/31/2021

Bond Characteristics

	Portfolio	% Avail
Avg. Coupon (%)	2.72	100
Current Yield (%)	2.60	100
Yield To Maturity	1.50	100
Yield to Call/Worst (%)	1.44	100
Eff. Maturity (Yrs)	4.31	100
Effective Duration	4.01	100
Avg. Quality	A	100
# of Securities	94	100

Bond Effective Maturity



Treasury Yields At Constant Maturities	Monday, January 03, 2022			
	WEEK ENDED		52-WEEK	
	Dec. 31	Dec. 24	HIGH	LOW
1-month	0.04	0.03	0.10	0.00
3-month	0.06	0.07	0.10	0.01
6-month	0.20	0.17	0.20	0.03
1-year	0.37	0.29	0.37	0.04
10-year	1.51	1.47	1.72	0.94