

# ST. AMBROSE FINANCIAL SERVICES, INC.

## Quarterly Interest Rates

### Historical Data

Index	30-Jun-18	30-Jun-19	30-Jun-20	30-Jun-21	31-Mar-22	30-Jun-22
* 3-Month Constant Maturity Treasury Yield	1.94%	2.18%	0.15%	0.05%	0.55%	0.55%
** Bond Fund Yield <i>SAFS</i> Investment Fund Yield <i>US Bank</i> Private Wealth Management	3.12%	3.04%	2.91%	2.59%	2.72%	2.83%
<b>Deposits</b>						
Margin	0.00%	0.00%	0.00%	0.00%	0.00%	0.00%
Rate (Base)	3.15%	3.05%	2.950%	2.600%	2.750%	2.850%
<b>Loans</b>						
Margin (Loan)	0.75%	0.75%	0.75%	0.75%	0.75%	0.75%
Margin (Loan-High)	2.75%	2.75%	2.75%	2.75%	2.75%	2.75%
Rate (Loan)	2.70%	2.950%	1.000%	1.000%	1.300%	1.300%
Rate (Loan-High)	4.70%	4.95%	3.000%	3.000%	3.300%	3.300%
Rate (Base)	3.40%	3.30%	3.200%	2.850%	3.000%	3.100%
Loan Rate (Base Plus)	3.65%	3.55%	3.450%	3.100%	3.250%	3.350%
<b>Revolving Line of Credit</b>						
Margin (LOC)	0.50%	0.50%	0.50%	0.50%	0.50%	0.50%
Rate (LOC)	3.65%	3.55%	3.45%	3.10%	3.25%	3.35%

\* As Published First Business Day Of The Quarter - Wall Street Journal - [http://www.wsj.com/mdc/public/page/2\\_3020-keyinrates.html](http://www.wsj.com/mdc/public/page/2_3020-keyinrates.html)

\*\* As published in the quarterly report (January, April, July & October) from U.S. Bank Private Wealth Management Relationship Review



ST AMBROSE FINANCIAL SERVICES UMA

Bond Detail

Account: 080013930700

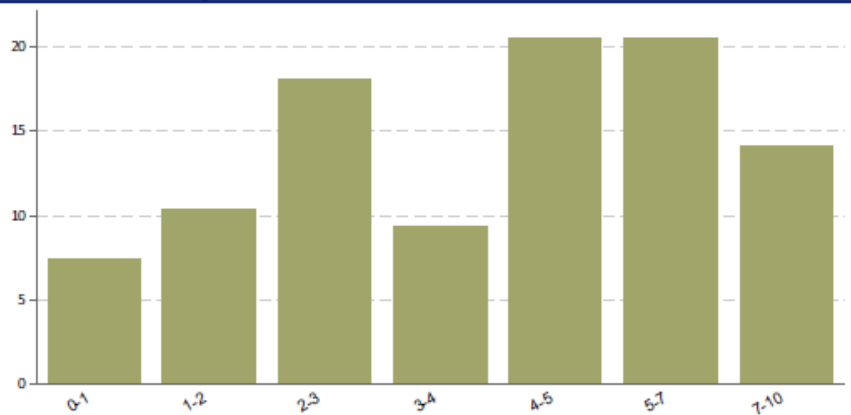
Holdings Method: Direct

Report Date: 06/30/2022

#### Bond Characteristics

	Portfolio	% Avail
Avg. Coupon (%)	2.71	100
Current Yield (%)	2.83	100
Yield To Maturity	3.75	100
Yield to Call/Worst (%)	3.75	100
Eff. Maturity (Yrs)	4.23	100
Effective Duration	3.85	100
Avg. Quality	A	100
# of Securities	93	100

#### Bond Effective Maturity



#### Treasury Yields At Constant Maturities

Tuesday, July 5, 2022

	WEEK ENDED		52-WEEK	
	JUL. 01	JUN. 24	HIGH	LOW
1-month	1.19	1.09	1.19	0.03
<b>3-month</b>	<b>1.76</b>	<b>1.67</b>	<b>1.76</b>	<b>0.03</b>
6-month	2.54	2.45	2.54	0.05
1-year	2.85	2.83	2.94	0.07
10-year	3.07	3.17	3.36	1.22